

Transportation Priority Projects

ROADWAYS • PUBLIC TRANSIT • BICYCLE & PEDESTRIAN



Letter from the Chester County Board of Commissioners

August 27, 2021

The Honorable Yassmin Gramian, Chair
Pennsylvania State Transportation Commission
400 North Street, 8th Floor
Harrisburg, PA 17120

Dear Secretary Gramian:

The Chester County Board of Commissioners is pleased to present you with our 2021 Transportation Priority Projects. This multi-modal set of transportation improvement projects is fundamental towards achieving the land use and transportation vision of both Chester County and the Commonwealth of Pennsylvania.

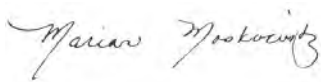
The COVID-19 pandemic continues to have a major impact on transportation with drastic reductions in revenues from the gas tax, turnpike tolling, and most significantly in public transportation fares. Those impacts magnify the need to develop and obtain reliable and sustainable transportation funding sources to not only maintain a state of good repair for our current transportation system, but also provide the opportunity for our communities and economy to grow.

Chester County is experiencing significant residential and industrial development and is forecasted to have substantial population growth, leading the region. Because of the county's geographic size, because of higher regional priorities for transportation investment than Chester County, and because of the age of many of our transportation facilities, Chester County has a huge backlog of transportation needs.

Recognizing that prioritization is more important now with the current funding situation, the Chester County Planning Commission inventoried the transportation improvement needs of our 73 municipalities then worked with a committee of our transportation planning, legislative, and economic development partners to identify the critical priority transportation projects found within this brochure.

We thank you for this opportunity to provide input towards the development of PennDOT's Twelve Year Program. We fully understand that the success of these critical investments will only be fully realized through coordinated, complementary land use planning. Together, we can continue to make Chester County, the Delaware Valley region, and the entire Commonwealth a great place to live, work, and connect.

Sincerely,



Marian D. Moskowitz
Chair



Josh Maxwell
Vice-Chair



Michelle Kichline
Commissioner

County Comprehensive Planning

The Transportation Priority Projects further advance the goals, objectives, and recommendations of *Landscapes3*, Chester County’s Comprehensive Plan. Transportation facilities are addressed primarily within the ‘How We CONNECT’ chapter of *Landscapes3*. Included are three policy maps that illustrate opportunities to improve options for all travel modes—vehicular, bicycle, pedestrian, public transit, and freight—and are essential to maintaining communities that support public health, provide accessible transportation options for all, and help to mitigate climate change.



CONNECT goal

Advance efficient, reliable, and innovative transportation, utility, and communications infrastructure systems that responsibly serve thriving and growing communities.

KEY issues

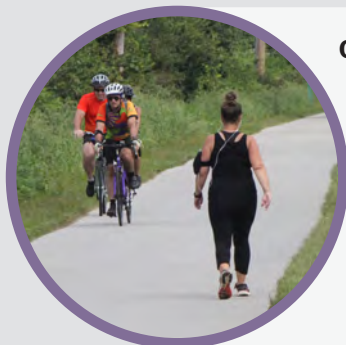


Remove Congestion Bottlenecks

Chester County major roadways would operate more efficiently and generate much less greenhouse gases by addressing the pinch points that cause congestion through application of intelligent transportation systems (ITS) technology, minor operational improvements, and limited added capacity.

Accommodate Future Growth

Chester County is forecasted for the most significant growth in the region which will require expanded public transit services, implementation of complete streets policies, and the creation of more multimodal transportation options.



Create Healthier Communities

Chester County aims to maintain its status as the Commonwealth’s healthiest county by advancing the development of the Circuit multi-use trail network, and providing for more active transportation networks to include facilities such as sidewalks, walkways, bike lanes, and improved connections to public transit services.

Letter of support from the Pennsylvania Senate

19TH DISTRICT
STATE SENATOR
CAROLYN T. COMITTA
457 MAIN CAPITOL BUILDING
SENATE BOX 203019
THE STATE CAPITOL
HARRISBURG, PA 17120-3019
717-787-5709
FAX: 717-787-4384

17 EAST GAY STREET • SUITE 301
WEST CHESTER, PA 19380
610-692-2112
FAX: 610-436-1721



Senate of Pennsylvania

COMMITTEES
ENVIRONMENTAL RESOURCES
& ENERGY, MINORITY CHAIR
AGRICULTURE & RURAL AFFAIRS
EDUCATION
HEALTH & HUMAN SERVICES
VETERANS AFFAIRS &
EMERGENCY PREPAREDNESS

CAPITOL PRESERVATION COMMITTEE
FLAG SUBCOMMITTEE

EMAIL: SenatorComitta@pasenate.com
WEBSITE: www.pasenate.com
TWITTER: @SenatorComitta
FACEBOOK: @SenatorComitta
INSTAGRAM: @SenatorComitta

July 27, 2021

The Honorable Yassmin Gramian, Chair
Pennsylvania State Transportation Commission
400 North Street, 8th Floor
Harrisburg, PA 17120

Dear Secretary Gramian:

Chester County has one of the largest projected growths in population and employment in southeast Pennsylvania. This significant growth is despite the negative impacts of COVID-19 not only on our society but also on our ability to capture the transportation revenues generated through the gas tax, turnpike tolls, public transit use, and other user-based revenue sources due to the pandemic's restrictions on mobility.

To address these transportation challenges, Chester County has continued to work with its municipalities and transportation planning partners to identify and prioritize roadway, bicycle/pedestrian, and public transportation improvement projects. These multi-modal projects are fundamental to achieving the land use and transportation vision of both Chester County and the Commonwealth of Pennsylvania. Upgrades would significantly improve access and further encourage usage that would benefit the economy and even reduce emissions. Additionally, projects to improve our roads, bridges, and highways are critical to reducing traffic and improving overall safety.

We, the undersigned members of the Pennsylvania Senate, who represent Chester County, are writing to express our wholehearted support for the *2021 Chester County Transportation Priority Projects*. These improvements are essential towards continuing the sustainability of our economy, our transportation system, and our communities.

Thank you for your consideration of our comments.

Sincerely,

CAROLYN COMITTA
SENATOR, 19TH DISTRICT

TIM KEARNEY
SENATOR, 26TH DISTRICT

JOHN KANE
SENATOR, 9TH DISTRICT

KATIE MUTH
SENATOR, 44TH DISTRICT

Letter of support from the Pennsylvania House of Representatives

TIM HENNESSEY, MEMBER
PA HOUSE OF REPRESENTATIVES
PO BOX 202026
HARRISBURG, PA 17120-2026
PHONE: (717) 787-3431 • FAX: (717) 787-9864

DISTRICT OFFICES:
COVENTRY SQUARE - SUITE 9
351 W. SCHUYLKILL ROAD
POTTSTOWN, PA 19465
PHONE: (610)326-2626 • FAX: (610) 326-2526

OLD ELVERSON TRAIN STATION
P.O. BOX 255
ELVERSON, PA 19520
PHONE: (610) 286-9194

FROM COATESVILLE AREA DIAL (610) 380-8600



House of Representatives
Commonwealth of Pennsylvania
Harrisburg

COMMITTEES:

MAJORITY CHAIRMAN - TRANSPORTATION

AGING & OLDER ADULT SERVICES

POLICY

CHAIRMAN - PA STEEL CAUCUS

E-mail: thenness@pahousegop.com

October 6, 2021

The Honorable Yassmin Gramian, Chair
Pennsylvania State Transportation Commission
400 North Street, 8th Floor
Harrisburg, PA 17120

Dear Secretary Gramian:

Chester County continues to experience significant growth despite the negative impacts of COVID-19 not only on our society but also on our ability to capture the transportation revenues generated through the gas tax, turnpike tolls, public transit use, and other user based revenue sources due to the pandemic's restrictions on mobility.

To address these challenges, Chester County has worked with its municipalities and transportation planning partners to identify and prioritize a set of multi-modal improvement projects that are fundamental to achieving the land use and transportation vision of both Chester County and the Commonwealth of Pennsylvania.

We, the undersigned members of the Pennsylvania House, who represent Chester County, are writing to express our wholehearted support for the 2021 Chester County Transportation Priority Projects.

These improvements are essential towards continuing the sustainability of our economy, our transportation system, and our communities.

We thank you for your time and consideration of these priorities.

Sincerely,

Chester County Delegation

Tim Hennessey
26th Legislative District

Dan Williams
74th Legislative District

Danielle Friel Otten
155th Legislative District

Christina Sappay
158th Legislative District

Craig Williams
160th Legislative District

John Lawrence
13th Legislative District

Melissa L. Shusterman
157th Legislative District

Diane Herrin
156th Legislative District



Roadways

The projects listed below are intended to maximize the efficiency and safety of existing and planned roadway corridors and facilities.

Congestion Areas



A **PA 113/US 30 Bypass to Peck Road**
Preliminary engineering



B **PA 23 Corridor/ Phoenixville**
Reduce congestion



C **PA 100/US 30 Bypass/ Exton Station**
Reduce congestion



D **US 202 Section 200**
Operational improvements



E **US 202 Section 100**
• PA 926 at US 202
• High Street interchange and Matlack Street intersection improvements

Reconstruction



F **US 30 Bypass Reconstruction & Widening***
Preliminary engineering and final design



G **US 1 Bypass: Maryland Line to Schoolhouse Rd.***
Preliminary engineering



H **Darby Road Extension: North Valley Road Bridge***
Preliminary engineering and final design

Corridor Improvements



I **PA 10: Corridor Safety Improvements***
Preliminary engineering



J **PA 896: Corridor Safety Improvements***
Final design



K **PA 41: Corridor Safety Improvements***
Construction



L **322 Corridor Improvements**
Reduce congestion

The following are **examples** of critical intersections and bridges across the county that need to be addressed:

Intersections

- M** PA 352 at King Road
- N** Baltimore Pike at Newark Road*
- O** PA 41 at State Road*

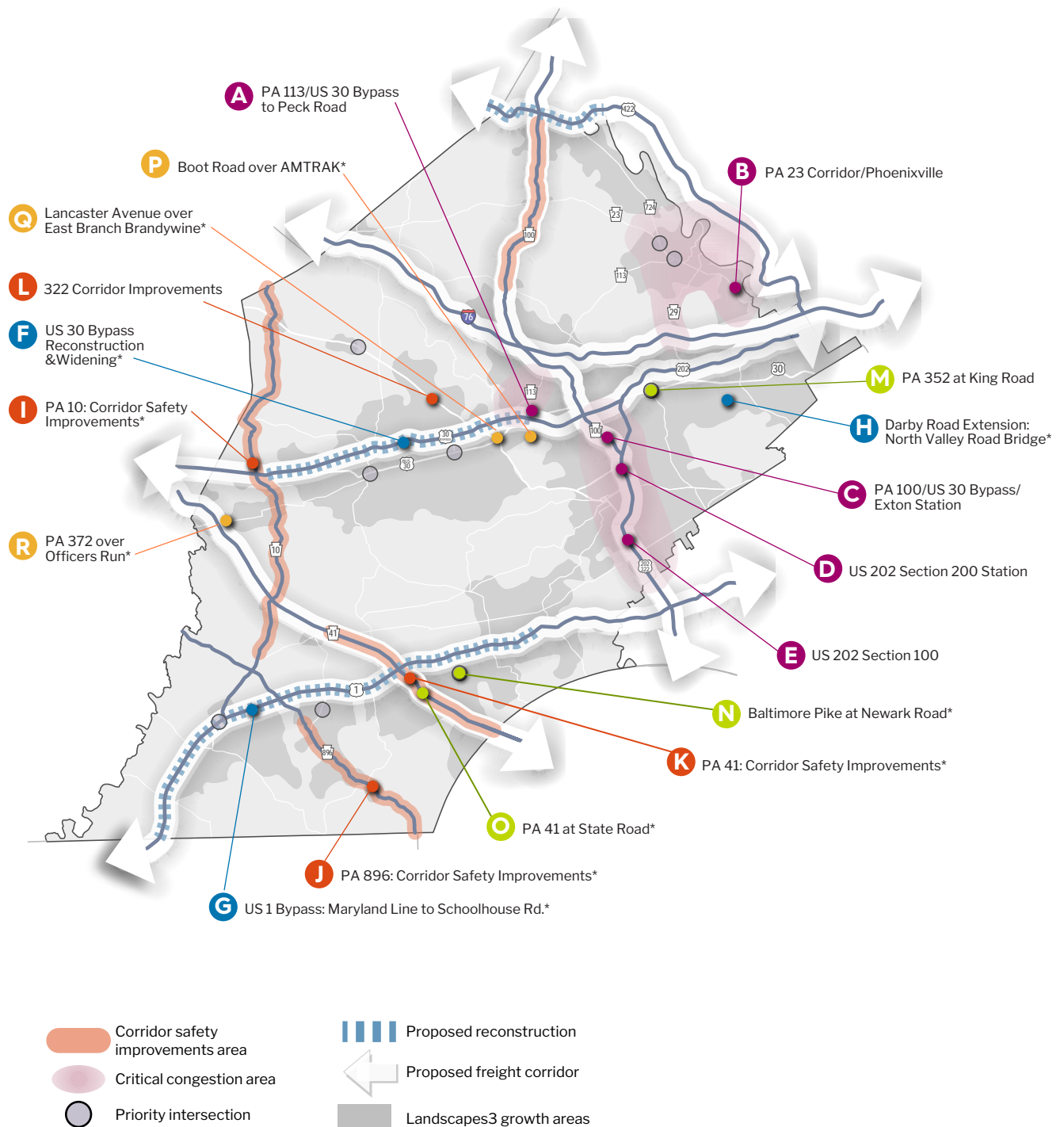
Bridges

- P** Boot Road over AMTRAK*
- Q** Lancaster Avenue over East Branch Brandywine*
- R** PA 372 over Officers Run*

* Transportation Improvement Program (TIP) funded

Roadway Network Planning Map

This policy map identifies the location of major planning, design, or construction activities that are anticipated to improve safety and mobility. [Landscapes3](#) ▶





Public Transit

The projects listed below are intended to promote the use of public transit as a viable alternative to single-occupant travel.



Keystone Corridor/Paoli-Thorndale Rail Stations

Planned improvements at existing rail stations

- Parkesburg
- Coatesville
- Downingtown
- Exton
- Paoli Transportation Center
- Devon



SEPTA Paoli-Thorndale Extension

Extend existing SEPTA regional rail service to Coatesville and Parkesburg



West Chester Pike "Better Bus" Pilot

Implementation of direct bus principles to provide for fewer stops and faster more reliable service



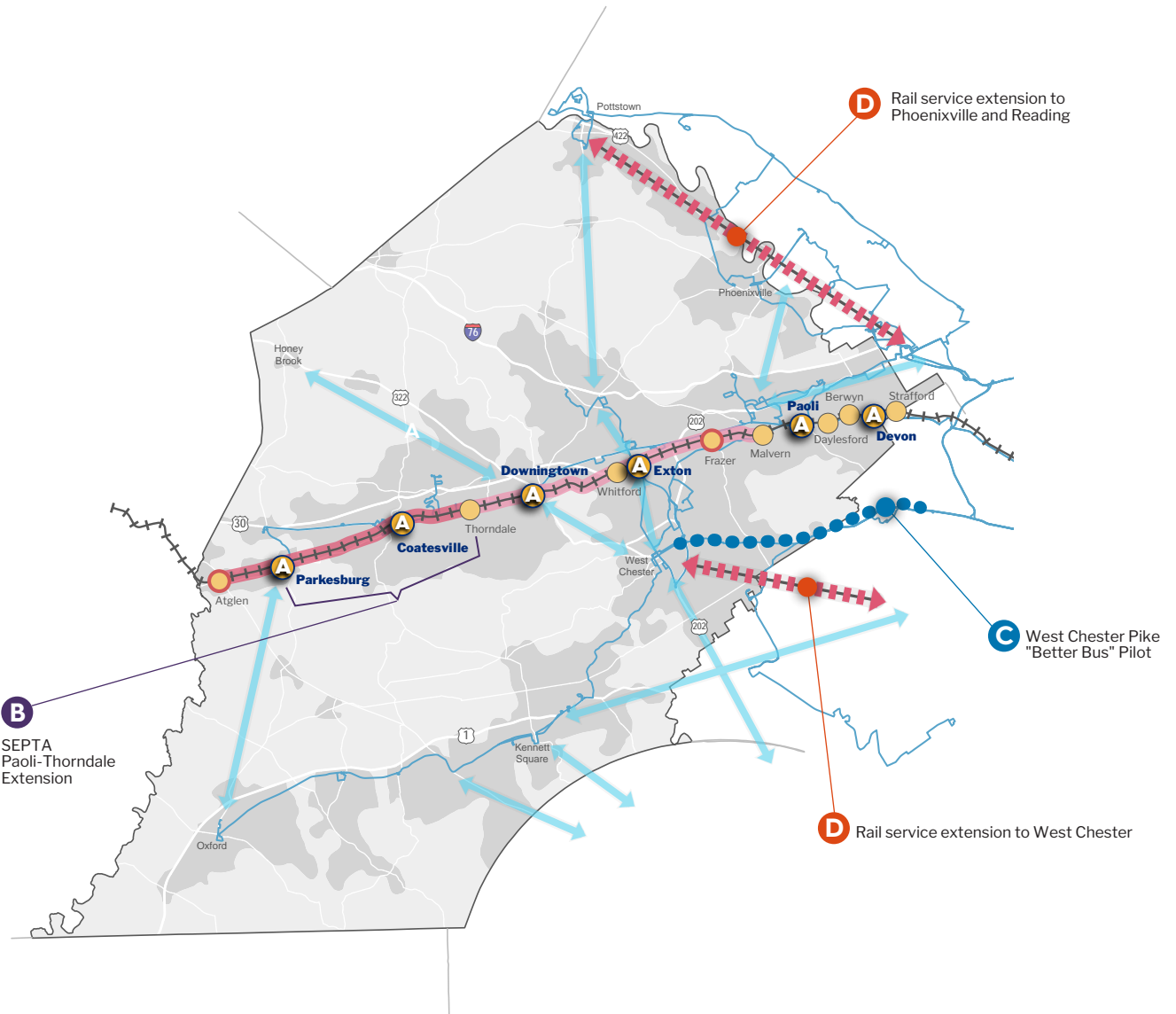
Rail service extensions to Phoenixville, Reading, and West Chester

Reestablishing passenger rail service in these rail corridors are aspirational projects requiring further study

Public Transit Planning Map

This policy map identifies the location of existing and proposed public transit facilities and services.

Landscapes3 ▶



B
SEPTA
Paoli-Thorndale
Extension

D Rail service extension to
Phoenixville and Reading

C West Chester Pike
"Better Bus" Pilot

D Rail service extension to West Chester

- | | | | |
|--|--|--|--|
| | Existing rail station | | Proposed commuter rail service |
| | Proposed commuter rail station | | Existing bus routes servicing the county |
| | Expanded commuter rail service frequency | | Proposed commuter bus service |
| | Extended commuter rail service | | Landscapes3 growth areas |



Bicycle & Pedestrian

The projects listed below are intended to expand pedestrian facilities and further develop a connected system of bicycle facilities as an important means of transportation and recreational travel.



Struble Trail Extension

Preliminary engineering, final design, and construction



Chester Valley Trail: Exton to Atglen

- Feasibility and engineering
- P&T Corridor into Downingtown
- Enola Low Grade into Atglen



Paoli Pike Trail

Construction



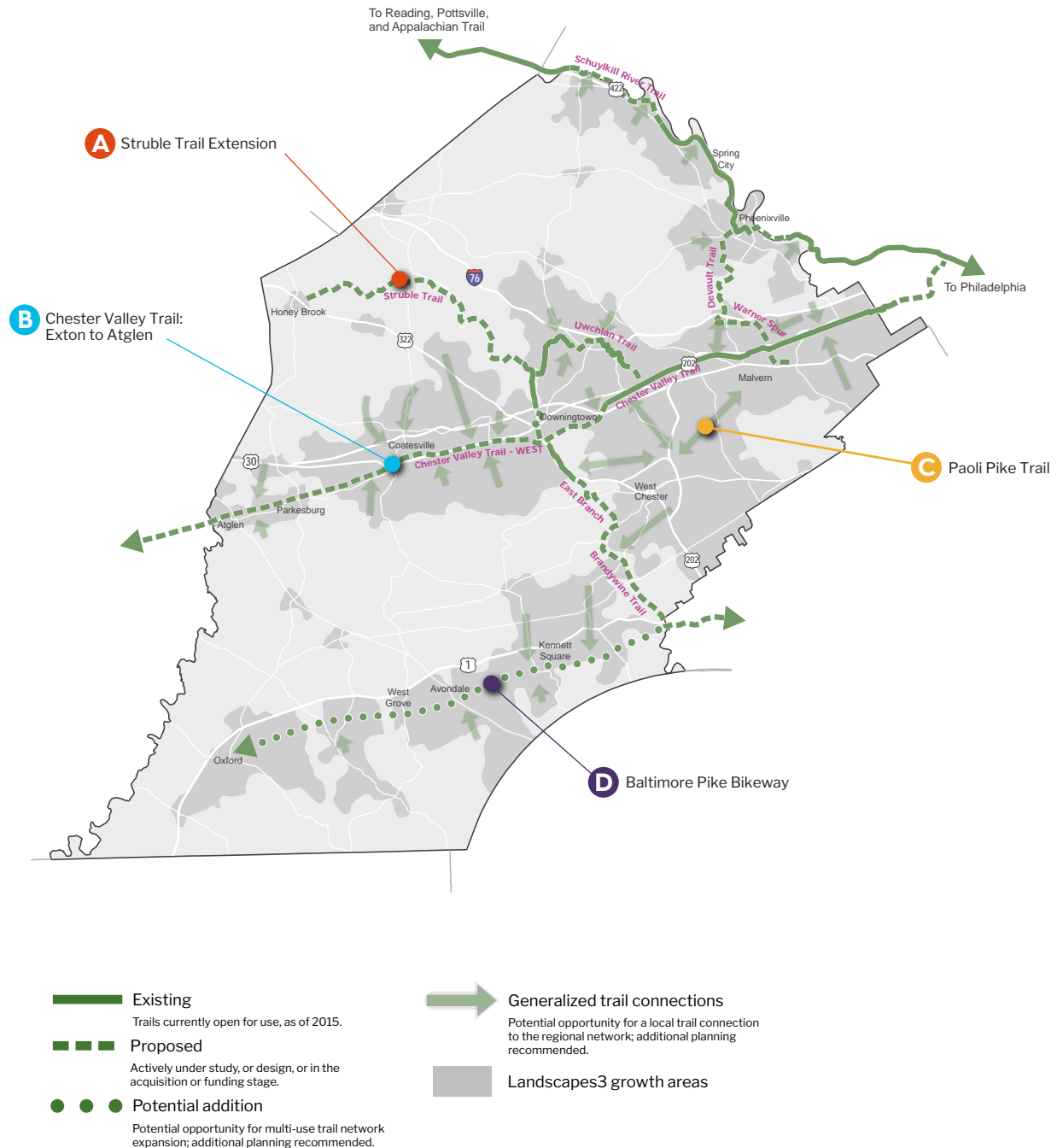
Baltimore Pike Bikeway

Feasibility Study & Master Plan

Circuit Trails Planning Map

This policy map identifies the location of existing and proposed multi-use trails that tie into Greater Philadelphia's trail network known as the Circuit.

Landscapes3 ▶



Chester County
Planning Commission
601 Westtown Road, Suite 270
P.O. Box 2747
West Chester, PA
19380-0990

610-344-6285



chescoplanning.org
info@chescoplanning.org

The transportation priorities for Chester County were developed in conjunction with:

Chester County Board of Commissioners

Chester County's Pennsylvania Senate Delegation

Chester County's Pennsylvania House of Representatives Delegation

Chester County Planning Commission

Chester County Facilities Department

Chester County Economic Development Council

Chester County Conference and Visitors Bureau

Greater Valley Forge Transportation Management Association

Pennsylvania Turnpike Commission

Pennsylvania Farm Bureau

PennDOT District 6-0

Transportation Management Association of Chester County

Western Chester County Chamber of Commerce