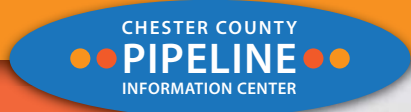


Chester County Pipeline Information Center



What is the Pipeline Information Center?

The Pipeline Information Center is a website that keeps residents, pipeline operators, and other county stakeholders informed about pipeline locations, projects, and safety issues in Chester County.

www.chesco.org/planning/pipelines



Pipelines in Chester County

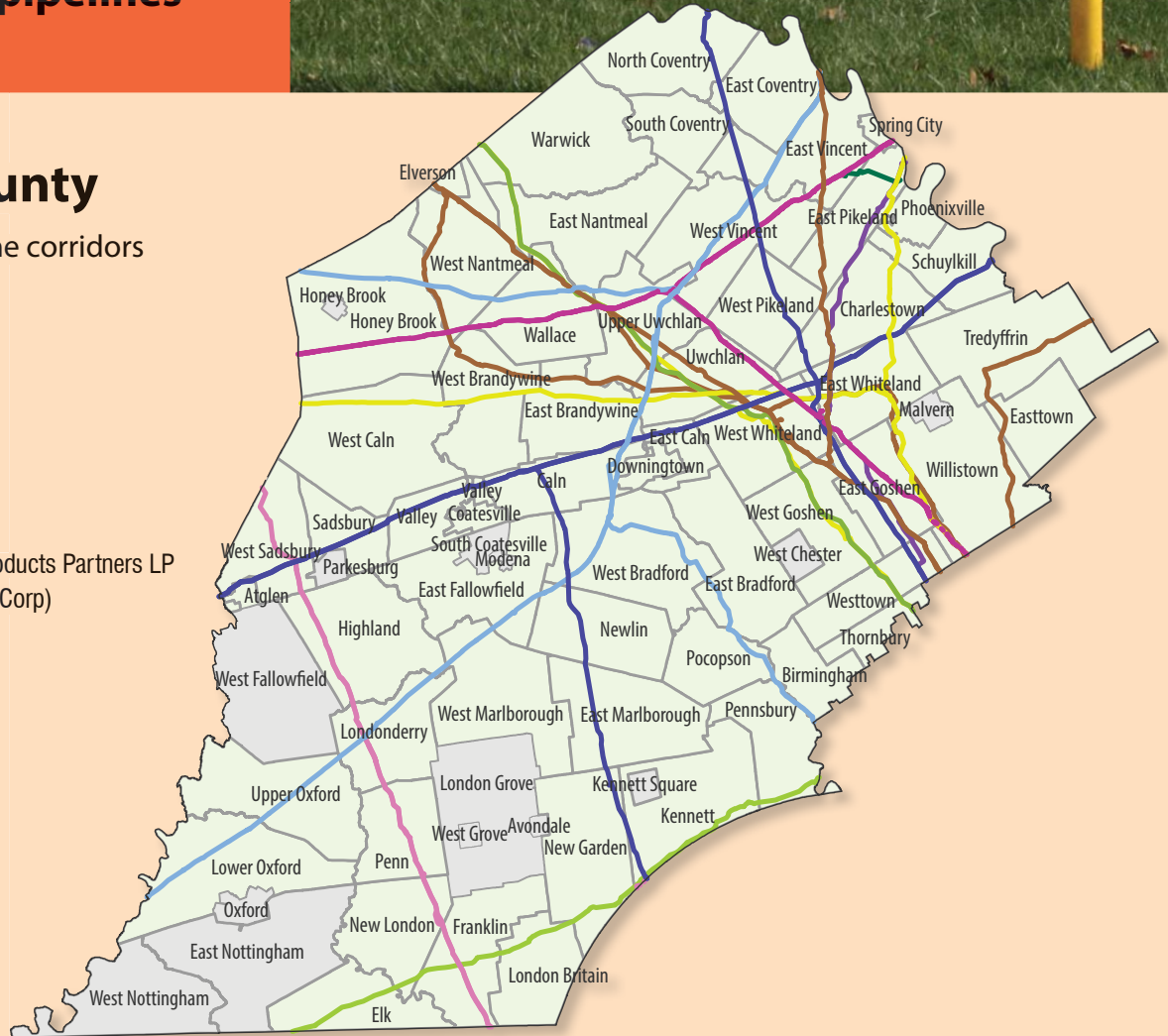
There are nearly 600 linear miles of pipeline corridors crossing Chester County.

Municipalities

- Intersected By Pipeline
- Not Intersected By Pipeline

Pipeline Operators

- TE Products Pipeline Company LP/Enterprise Products Partners LP
- Texas Eastern Transmission LP (Spectra Energy Corp)
- Colonial Pipeline Co
- Columbia Gas Transmission Corp
- Eastern Shore Natural Gas Co
- Laurel Pipeline Company/Buckeye Partners
- Peco Energy Co
- Interstate Energy Company
- Sunoco Logistics
- Williams Gas Pipeline – Transco

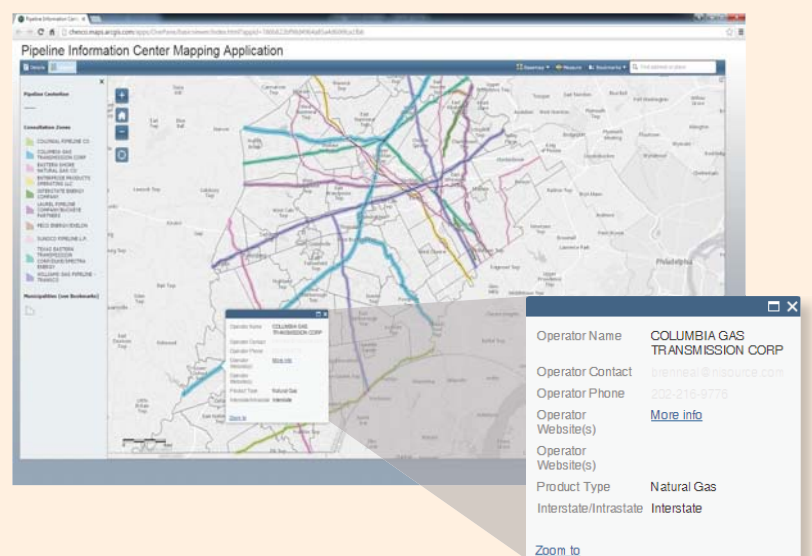


What you can find on the website:

- Active pipeline projects
- Pipeline events and important dates
- Pipelines in the news
- Landowners' right-of-way resources
- Pipeline safety information
- Regulatory process
- Contacts for agencies and pipeline operators

■ Interactive pipeline mapping

An interactive map allows users to search for their location relative to nearby pipelines. A pop-up box provides additional information on the pipeline product type and operator.



Contact us

Chester County Pipeline Information Center
www.chesco.org/planning/pipelines
ccpipelines@chesco.org

Pipeline Point of Contact

Chester County Planning Commission
 610-344-6285
 The Planning Commission maintains the Pipeline Information Center and serves as the county's point of contact for pipeline information.



Chester County Board of Commissioners
 Terence Farrell
 Kathi Cozzone
 Michelle Kichline